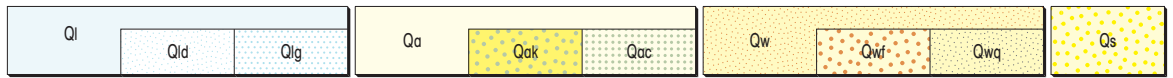


PHANEROZOIC

CAINOZOIC

QUATERNARY



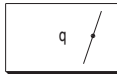
- Ql Lacustrine deposits — mud, silt, and minor sand in playa lakes, commonly saline; primarily associated with palaeodrainage systems
- Qld Sand in dunes on and around playa lakes; in places gypsiferous
- Qlg Gypsiferous and saline bedded deposits, generally associated with major lake systems
- Qa Alluvium — sand, silt, and gravel in channels and channel systems; poorly consolidated
- Qak Calcrete associated with palaeodrainage and active drainage systems
- Qac Clay and silt in non-saline claypans
- Qw Sheetwash deposits — sand, silt, and gravel in areas that lack clearly defined drainage channels
- Qwf Ferruginous gravel
- Qwq Quartz rubble adjacent to and washed from quartz veins
- Qs Sandplain and dunes — sand and minor silt; largely eolian; minor residual component



- Czc Colluvium — gravel, sand, and silt, commonly consolidated and dissected
- Czcf Ferruginous rubble and colluvium, dominantly ferruginized pisoliths and nodules with ferruginized rock and ironstone rubble; degraded lateritic duricrust
- Czcq Rubble and colluvium derived from quartz veins



- Czrf Ferruginous duricrust — nodular, pisolitic, and massive ferricrete, and associated debris
- Czrz Siliceous duricrust — nodular, pisolitic, and massive silcrete, and intensely silicified rock



Quartz vein

Stanley Fold Belt (?1760 Ma)

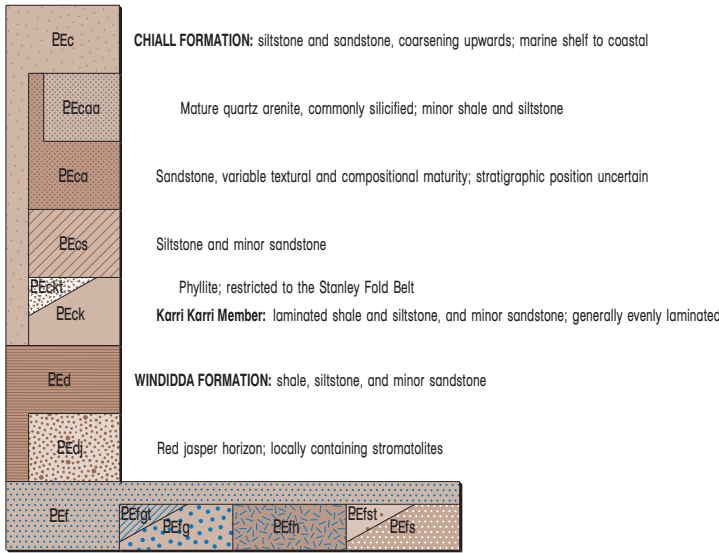
PROTEROZOIC

PALAEOPROTEROZOIC

Eoraheedy Group

Miningarra Subgroup

Toooloo Subgroup



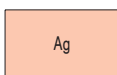
- FRERE FORMATION:**
- PEf Granular and laminar iron-formation, granular siliceous iron-formation, siltstone, shale, and chert; marine to near-shore
 - PEfgt Laminar granular iron-formation; deformed and metamorphosed in the Stanley Fold Belt
 - PEfg Granular iron-formation and granular siliceous iron-formation, in places peloidal; minor siltstone, shale, and chert
 - PEfh Massive green chert
 - PEfst Phyllite and phyllitic shale; minor deformed and metamorphosed iron-formation; restricted to the Stanley Fold Belt
 - PEfs Siltstone and shale; minor iron-formation



YELMA FORMATION (Diagrammatic Sections and Interpreted Bedrock Geology only)



Dolerite dyke, concealed; interpreted from aeromagnetic data



Granitoid rock (Diagrammatic Sections and Interpreted Bedrock Geology only)

ARCHAEAN

EORAHEEDY BASIN

YILGARN CRATON