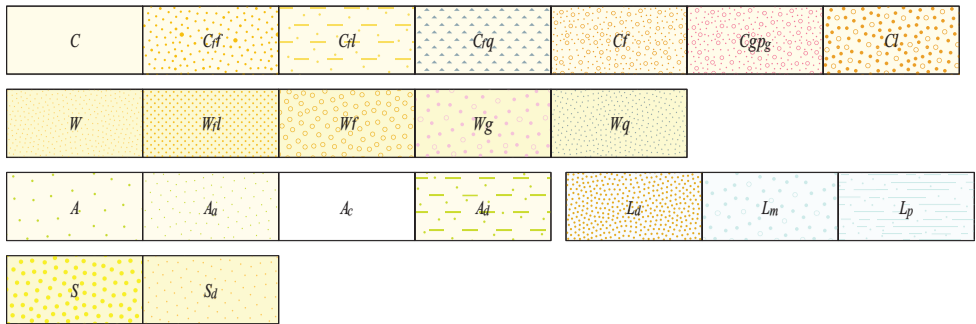


PHANEROZOIC
CENOZOIC
PROTEROZOIC
ARCHEAN



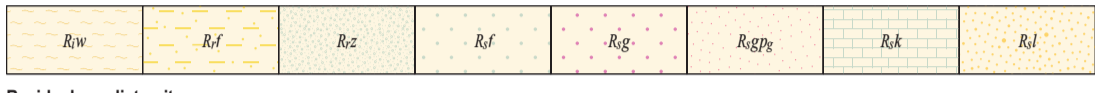
Colluvial units
C Colluvium derived from different rock types; includes gravel, sand, and silt
Cf Colluvial footslope containing ferruginous gravel and reworked ferruginous duricrust
Cd Colluvial footslope deposits derived from different rock types; includes gravel, sand, and silt
Cq Quartz-vein debris on colluvial footslope
Cf Ferruginous gravel and reworked ferruginous duricrust
Cgp Quartzofeldspathic gravel, sand, and silt commonly derived from granitic rock and associated weathering products
Ct Sand, silt, and clay in heterogeneous colluvial deposits; reworked by sheetwash, alluvial or eolian processes; includes ferruginous and silcrete clasts

Sheetwash units
W Clay, silt, and sand in extensive fans; local ferruginous gravel
Wfl Clay, silt, and sand on sheetflood fan; local ferruginous gravel
Wf Clay, silt, and sand with abundant ferruginous grit
Wg Clay, silt, and sand sheetwash deposits, commonly derived from granitic rock
Wq Clay, silt, and sand sheetwash deposits with abundant quartz-vein debris

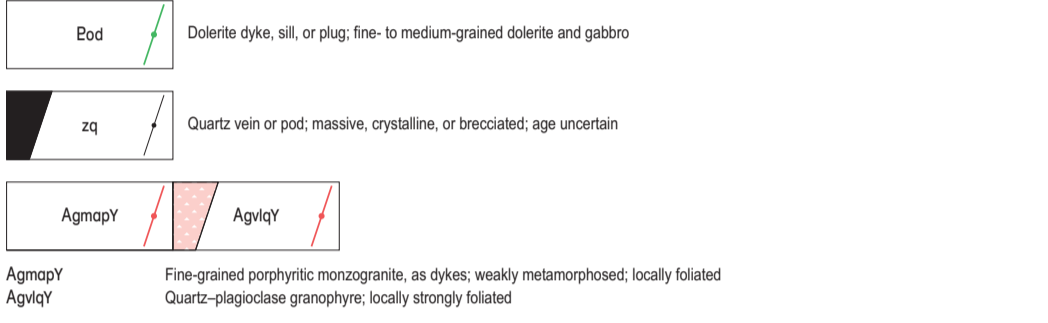
Alluvial units
A Clay, silt, sand, and gravel in channels and on floodplains
Aa Clay, silt, sand, and gravel on alluvial plains
Ac Clay, silt, sand, and gravel in fluvial channels
Ad Clay, silt, and sand in braided swales on floodplains

Lacustrine units
La Sand, silt, and gypsum in dunes adjacent to and within playa lakes
Lm Mixed dunes, evaporite, and alluvial deposits; typically adjacent to playa lakes
Lp Saline and gypsiferous evaporite deposits, clay, silt, and sand in playa lakes

Sandplain units
S Residual and eolian sand with minor silt and clay; low vegetated dunes locally common
St Sand in stabilized dunes

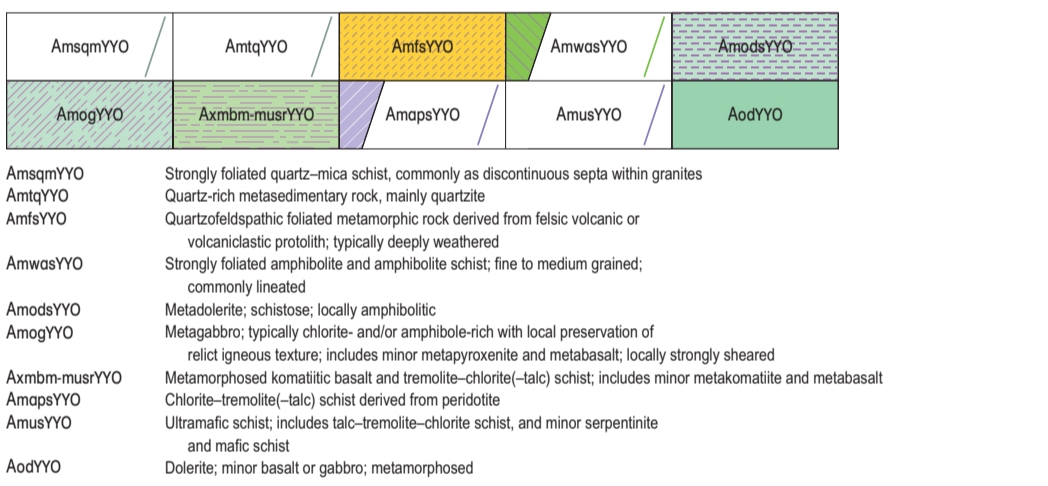


Residual or relict units
R1w Deeply weathered rock; protolith undetermined
R1f Ferruginous duricrust, massive to rubby; includes iron-cemented reworked products
R1z Silcrete
R1f Residual sand and minor gravel derived from ferruginous duricrust
R1g Quartzofeldspathic sand, commonly over granite
R1gp Quartzofeldspathic sand and minor silcrete over granite; sparse granite outcrop; includes mottled and leached zones of weathering profile
R1k Residual sand and calcrete; nodular and pisolitic
R1d Yellow sand with minor pisolitic laterite, ferruginized silcrete, silt, and clay; common on low plateaus associated with weathered granite

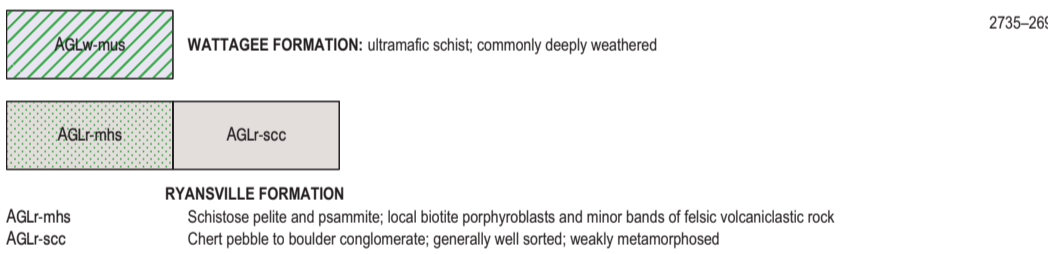


Tuckanarra Suite
Eod Dolerite dyke, sill, or plug; fine- to medium-grained dolerite and gabbro
zq Quartz vein or pod; massive, crystalline, or brecciated; age uncertain
AgmapY Fine-grained porphyritic monzogranite, as dykes; weakly metamorphosed; locally foliated
AgvlqY Quartz-plagioclase granophyre; locally strongly foliated

CUNDIMURRA MONZOGRANITE
ATU-mg Metamonzogranite to metagranodiorite; commonly foliated
ATU-mgml Medium-grained, leucocratic metamonzogranite; foliated
ATU-mgmu K-feldspar megacrystic biotite metamonzogranite; strongly foliated
ATU-gml Fine-grained granite; undeformed; common magmatic foliation
ATUcu-mgmu K-feldspar megacrystic biotite metamonzogranite; strongly foliated
ATUcu-mgmy Biotite metamonzogranite; mylonitic; commonly with pegmatite veins and other intrusive granitic phases
ATUcu-gmfe Equigranular monzogranite to syenogranite; undeformed; common magmatic foliation (section only)



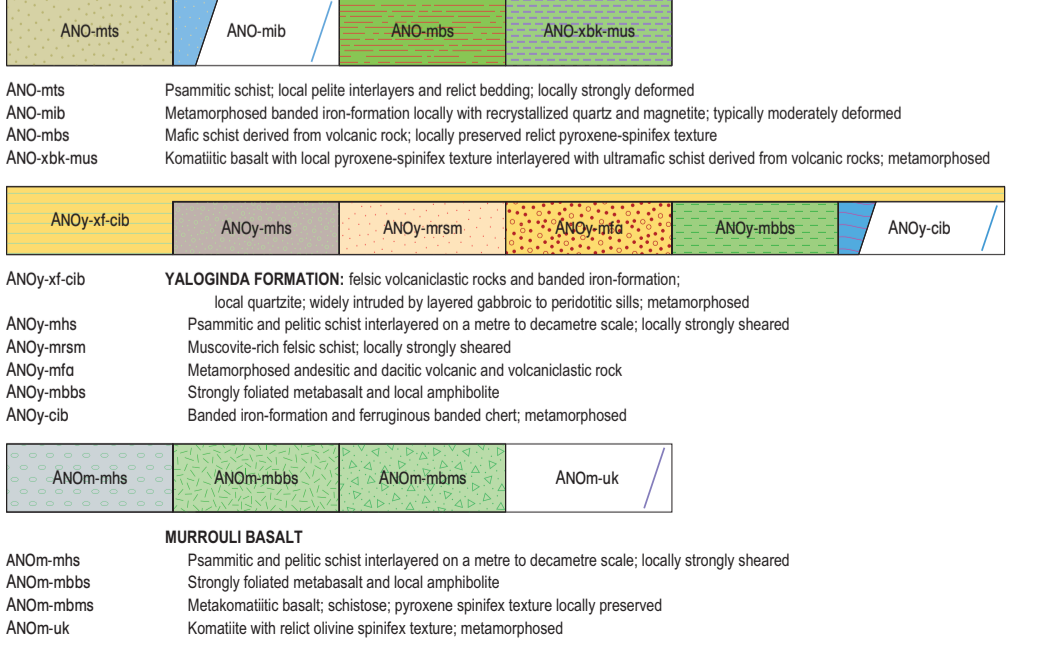
AmsqY Strongly foliated quartz-mica schist, commonly as discontinuous septa within granites
AmtqY Quartz-rich metasedimentary rock, mainly quartzite
AmfsY Quartzofeldspathic foliated metamorphic rock derived from felsic volcanic or volcanoclastic protolith; typically deeply weathered
AmwasY Strongly foliated amphibolite and amphibolite schist, fine to medium grained; commonly lineated
AmodsY Metadolerite; schistose; locally amphibolitic
AmogY Metagabbro; typically chlorite- and/or amphibole-rich with local preservation of relict igneous texture; includes minor metapyroxenite and metabasalt; locally strongly sheared
Axmbm-musY Metamorphosed komatiitic basalt and tremolite-chlorite(-tal) schist; includes minor metakomatiite and metabasalt
AmapsY Chlorite-tremolite(-tal) schist derived from peridotite
AmusY Ultramafic schist; includes talc-tremolite-chlorite schist, and minor serpentinite and mafic schist
AodY Dolerite; minor basalt or gabbro; metamorphosed



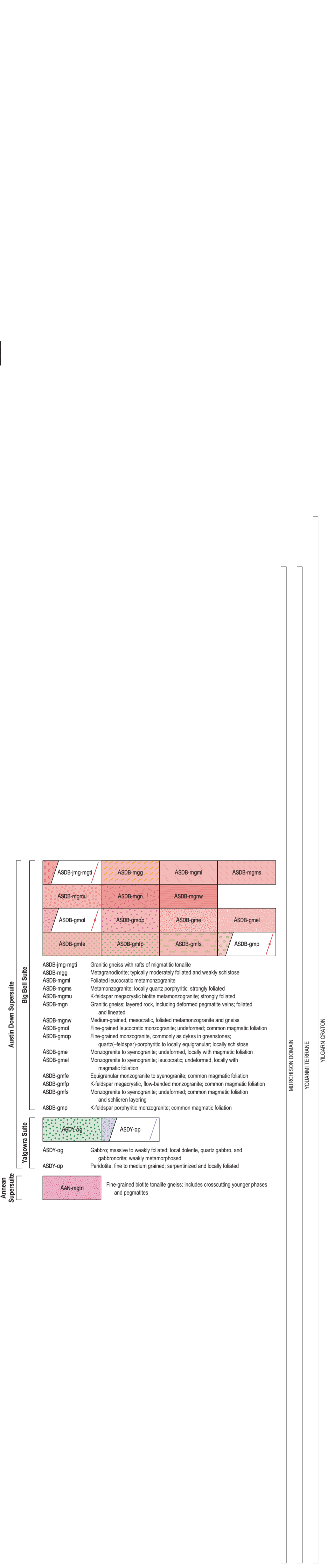
WATTAGEE FORMATION: ultramafic schist, commonly deeply weathered
RYANSVILLE FORMATION
AGLr-mhs Schistose pelite and psammite; local biotite porphyroblasts and minor bands of felsic volcanoclastic rock
AGLr-scc Chert pebble to boulder conglomerate; generally well sorted; weakly metamorphosed



Murchison Supergroup
WILGIE MIA FORMATION
APOw-mhs Schistose pelite and psammite with local biotite porphyroblasts
APOw-mib Foliated metamorphosed banded iron-formation; commonly with coarse, granular, and recrystallized magnetite crystals
APOw-fn Felsic volcanic and volcanoclastic rocks, undivided; metamorphosed; commonly deeply weathered and kaolinized
MEEKATHARRA FORMATION
APOm-mbba Amphibolite derived from basalt; massive to foliated and/or lineated
APOm-mbms Fine-grained ultramafic schist derived from komatiitic basalt; local talc-carbonate rock; commonly deeply weathered
APOm-bb Basalt; massive to weakly foliated; locally pillowed and/or vesicular; metamorphosed



YALOGINDA FORMATION: felsic volcanoclastic rocks and banded iron-formation; local quartzite; widely intruded by layered gabbroic to peridotitic sills; metamorphosed
YALOGINDA FORMATION: felsic volcanoclastic rocks and banded iron-formation; local quartzite; widely intruded by layered gabbroic to peridotitic sills; metamorphosed
MURROULI BASALT
ANOm-mhs Psammite and pelitic schist interlayered on a metre to decametre scale; locally strongly sheared
ANOm-mbbs Strongly foliated metabasalt and local amphibolite
ANOm-mbms Metakomatiitic basalt; schistose; pyroxene spinifex texture locally preserved
ANOm-uk Komatiite with relict olivine spinifex texture; metamorphosed



Austin Down Supersuite
Big Bell Suite
ASDB-jmg-mgtl Granitic gneiss with rafts of migmatitic tonalite
ASDB-mgg Metagranodiorite; typically moderately foliated and weakly schistose
ASDB-mgml Foliated leucocratic metamonzogranite
ASDB-mgms Metamonzogranite; locally quartz porphyritic; strongly foliated
ASDB-mgmu K-feldspar megacrystic biotite metamonzogranite; strongly foliated
ASDB-mgn Granitic gneiss; layered rock, including deformed pegmatite veins; foliated and lineated
ASDB-mgnw Medium-grained, mesocratic, foliated metamonzogranite and gneiss
ASDB-gml Fine-grained leucocratic monzogranite; undeformed; common magmatic foliation
ASDB-gmap Fine-grained monzogranite, commonly as dykes in greenstones; quartz(-feldspar)-porphyritic to locally equigranular; locally schistose
ASDB-gme Monzogranite to syenogranite; undeformed, locally with magmatic foliation
ASDB-gmel Monzogranite to syenogranite; leucocratic; undeformed, locally with magmatic foliation
ASDB-gmfe Equigranular monzogranite to syenogranite; common magmatic foliation
ASDB-gmfp K-feldspar megacrystic, flow-banded monzogranite; common magmatic foliation
ASDB-gmfs Monzogranite to syenogranite; undeformed; common magmatic foliation and schlieren layering
ASDB-gmp K-feldspar porphyritic monzogranite; common magmatic foliation

Yalgowra Suite
ASDY-og Gabbro; massive to weakly foliated; local dolerite, quartz gabbro, and gabbrotonite; weakly metamorphosed
ASDY-op Peridotite, fine to medium grained; serpentinitized and locally foliated

Anmean Supersuite
AAN-mgtn Fine-grained biotite tonalite gneiss; includes crosscutting younger phases and pegmatites

MURCHISON DOMAIN
YOUNAMI TERRANE
YILGARN CRATON