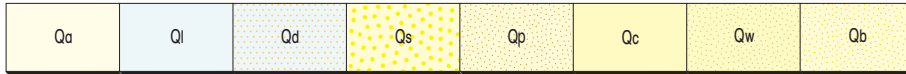


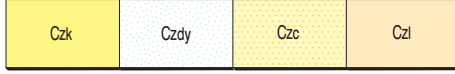
PHANEROZOIC

CAINOZOIC

QUATERNARY



- Qa Alluvium — unconsolidated silt, sand, and gravel; in drainage channels and on adjacent floodplains
- Ql Lacustrine deposits — clay, silt, and silty sand; playa (saline) and claypan (fresh) deposits
- Qd Mixed lacustrine and eolian deposits — clay, silt, and sand; vegetated swamps, numerous small claypans with fringing lunette dunes
- Qs Eolian deposits — sand, in sheets and simple longitudinal (seif), chain longitudinal, and net dunes
- Qp Eolian sand with ironstone pebble, rock fragment, and quartz pebble veneer; in sheets and between dunes
- Qc Colluvium — quartz pebble and rock fragment veneer on sand, silty sand; adjacent to, or over, shallow bedrock; scree and talus
- Qw Colluvium and alluvium — silt, sand, and gravel on low slopes and sheetwash areas
- Qb Eluvium — swelling-clay soil (gilgai); characterized by 'crabhole' surface



- Czk Calcrete — massive, nodular, and vuggy limestone; some surface silicification; in palaeodrainage lines
- Czdy Gypsiferous material, kopi, in eroded dunes
- Czc Colluvium — consolidated silt, sand, and gravel; dissected by active channels
- Czl Massive and pisolitic laterite, and ferruginous duricrust



- d Dolerite dyke
- fb Silicified rock and fault breccia; tectonically controlled

< 610 Ma

Savory Group

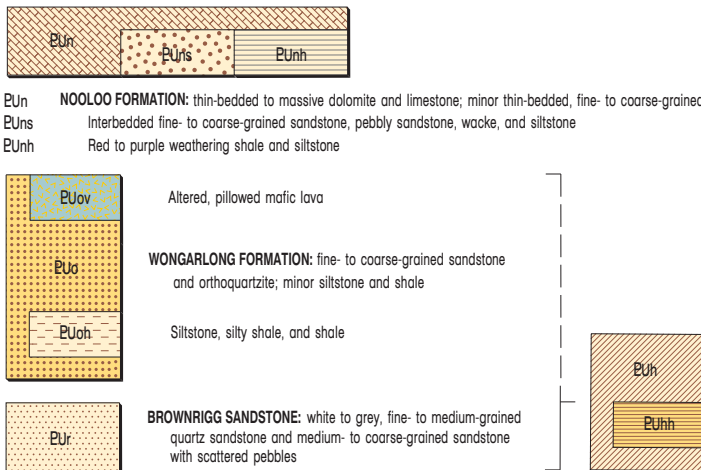


McFADDEN FORMATION: laminated fine- to coarse-grained quartz sandstone, feldspathic sandstone, and quartz wacke; minor conglomerate and siltstone

SAVORY BASIN

c. 800 Ma

Tarcunyah Group



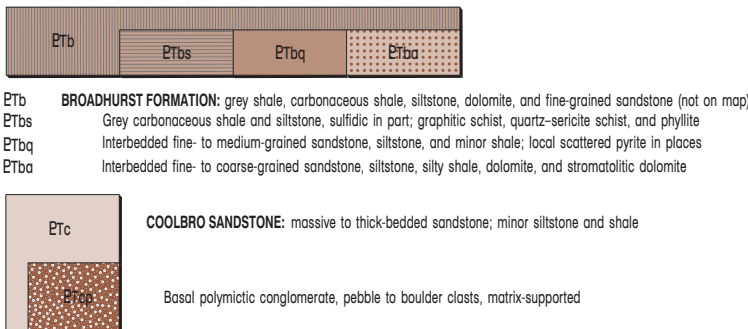
CHORUN FORMATION: red-brown, medium- to coarse-grained sandstone, pebbly sandstone, quartz wacke, nodule-bearing sandstone, polymictic pebble to cobble conglomerate, and quartz pebble conglomerate
Siltstone with felsic tuff

PATERSON OROGEN

> 900 Ma

Yeneena Supergroup

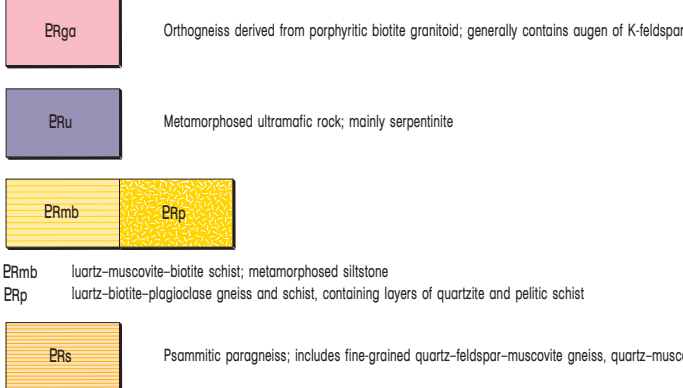
Throssell Group



Yeneena Basin

1765–1790 Ma

Ruddell Complex



- ERmb Quartz-muscovite-biotite schist; metamorphosed siltstone
- ERp Quartz-biotite-plagioclase gneiss and schist, containing layers of quartzite and pelitic schist
- ERs Psammitic paragneiss; includes fine-grained quartz-feldspar-muscovite gneiss, quartz-muscovite schist, and quartzite layers