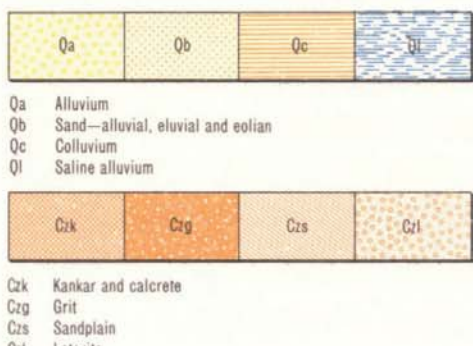


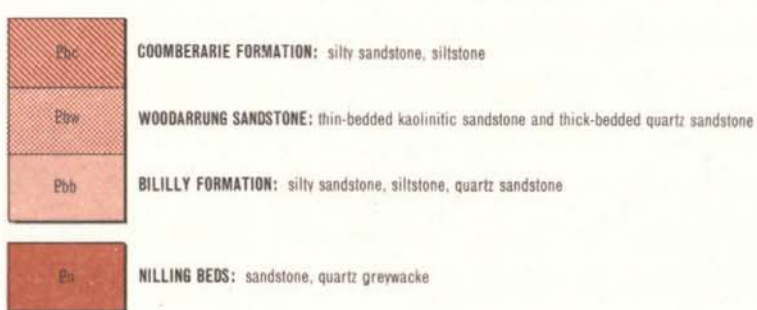
REFERENCE

CAINOZOIC
QUATERNARY



PROTEROZOIC

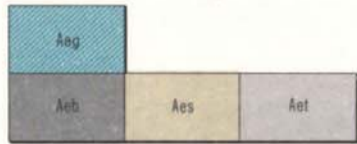
Badgeradda Group



ARCHAEOAN



TALLERING FORMATION
Atg Metagabbro
At Metamorphosed sandstone, siltstone and acid volcanics
Ats Quartz-muscovite schist; originally siltstone and sandstone
Ata Quartz-plagioclase-muscovite schist; originally acid volcanics
Atc Metamorphosed polymictic conglomerate



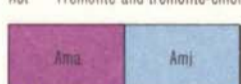
EERADA FORMATION
Aeg Metagabbro
Aeb Actinolite-quartz schist
Aes Quartz-plagioclase-muscovite schist
Aet Actinolite-tremolite schist



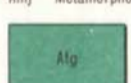
ILLIMBIRRIE FORMATION
Aid Metadolerite, metagabbro
Ais Metamorphosed acid volcanics, minor sandstones and siltstones
Aia Metamorphosed acid volcanics
Air Metamorphosed rhyolite and dacite tuffs; banded
Aif Metamorphosed basic pyroclastic rocks, tuffs and agglomerates
Aij Metamorphosed banded iron formation with phyllites
Aib Metabasalt
Aie Amphibolite; fine-grained
Ait Tremolite and tremolite-chlorite schist; medium-grained



BARLOWEERIE FORMATION
Abg Metagabbro
Abm Metabasalt; massive and amygdaloidal
Abr Metamorphosed rhyolite
Abc Metamorphosed polymictic conglomerate
Abj Metamorphosed banded iron formation
Aba Amphibolite; fine-grained, dark green
Abt Tremolite and tremolite-chlorite schist; medium-grained



MOYAGEE FORMATION
Ama Metamorphosed basic rocks; fine-grained. Includes minor tuffs. Contact metamorphosed by granitic rocks
Amj Metamorphosed banded iron formation



Afg Metagabbro, metadolerite



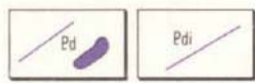
Asj Metamorphosed banded iron formation and quartz-muscovite schist
Aj Metamorphosed banded iron formation and actinolite-plagioclase-quartz schist
Aab Actinolite-tremolite schist
Ava Metamorphosed acid volcanics; fine-grained



AAg Granite; even-grained; some recrystallization
AAa Granulite; coarse-grained, banded
AAb Granulite; medium-grained. Carries amphibolite remnants

INTRUSIVE ROCKS

PROTEROZOIC



Pd Dolerite dyke
Pdi Diorite dyke



q Quartz vein
Ad Dolerite dyke; uralitized



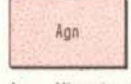
Agp Granite; porphyritic
Age Granite; even-grained
Agpb Biotite granite; porphyritic
Ageb Biotite granite; even-grained
Agl Lit-par-lit association of Age with Illimbirrie and Barloweerie Formations



Aga Granite; even-grained, foliated
Agb Biotite granite; foliated
Agf Granite; fine-grained, foliated



Agm Granite; even-grained, foliated. Carries mobilized xenoliths



Agn Migmatite of metamorphic and granitic rocks

ARCHAEOAN

WEATHERED ROCKS



Overprint indicating deeply weathered rocks

Not correlated between areas

Occur as xenoliths in granitic rocks and as isolated exposures. Unknown formational status