

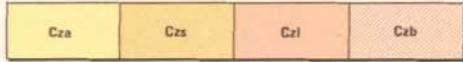
REFERENCE



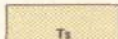
- Qf Sand - beach and dune; un lithified mobile sand
- Qe Estuarine and lagoonal deposits - clay, silt and sand
- Qed Sand dunes on Qe - poorly lithified; vegetated
- Qpl Limestone - cross-bedded calcareous sand in calcareous matrix
- Qps White quartz sand on, and adjacent to, limestone



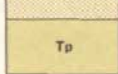
- Qa Clay, silt, sand and gravel in watercourses
- Ql Lake and swamp deposits - sand, silt, clay; may be saline and/or gypsiferous
- Qd Mixed alluvium and lake deposits with sand dunes - marginal to lakes; gypsiferous in part
- Qc Colluvium - sand, silt, clay



- Cza Alluvium and colluvium - pebbles, sand, silt and clay; includes un lithified as well as lateritized lithified deposits present in old flat-bottomed valleys which contain lakes
- Czs Sand - white, grey or brown, commonly contains iron pisoliths and overlies laterite
- Czl Laterite - massive and pisolitic deposits; includes both in situ and clastic types interbedded with sandstone
- Czb Silerete - includes friable sandstone



Sandstone, medium-grained; friable



PLANTAGENET GROUP : mostly PALLINUP SILTSTONE; spongolite with minor siltstone and sandstone; includes Nanarup Limestone Member of the WERILLUP FORMATION



Dolerite and diorite dykes; dashed line indicates soil-covered dyke



Quartz dykes and veins



Dolerite dykes and sills in the STIRLING RANGE FORMATION; variably deformed and recrystallized



STIRLING RANGE FORMATION

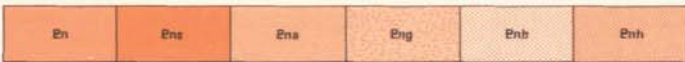
- Eaa Sandstone, quartzite
- Eas Sandstone, shale (slate, phyllite)



- Egh Hornblende-bearing granite to quartz monzonite
- Ega Augen gneiss; developed from Egp
- Egp Porphyritic biotite granite and adamellite
- Ege Medium even-grained biotite adamellite
- Egm Mixed granitic rocks; mostly porphyritic and even-grained varieties
- Ebn Migmatite; granoblastic or gneissic palaeosome (Enb, Ena) and allotriomorphic granular neosome of Egp



Unassigned metamorphic and igneous rocks on islands



- En Gneiss; unassigned
- Ens Gneiss; granoblastic granite, adamellite with streaks of mafic minerals (biotite, hornblende or pyroxene) or magnetite, garnet common; includes minor layered and granofelsic rocks
- Ena Augen gneiss; coarse-grained with microcline augen
- Eng Granitic gneiss; fine to medium-grained with subordinate megacrystic varieties; weak foliation; granoblastic texture
- Enb Quartz-feldspar-biotite (-garnet-hypersthene) gneiss; compositionally layered gneiss with subordinate Ens and granofels; includes amphibolite and mafic granulite layers; granoblastic fabric
- Enh Heterogeneous compositionally layered gneiss rich in enclaves; more than one period of migmatization and isoclinal folding



- Ea Medium-grained mafic rock; amphibolite and granulite
- Ei Banded quartz-magnetite (hematite) (-chlorite-amphibole) rock; metamorphosed banded iron-formation
- Eq Quartzite



- Ag Granitoid; unassigned
- Agv Medium-grained adamellite; granite with scattered to locally abundant feldspar megacrysts
- Agp Porphyritic adamellite and granite with microcline megacrysts
- Age Medium even-grained biotite adamellite and granite
- Agm Mixed porphyritic and even-grained biotite adamellite and granite



- Ans Gneiss; granoblastic adamellite, granodiorite and tonalite with streaks of biotite or hornblende, garnet common; includes minor banded and granofelsic rocks
- Am Migmatite; granoblastic or gneissic palaeosome in allotriomorphic granular neosome of medium, even-grained biotite adamellite



- Ai Banded quartz-magnetite (hematite) rock; metamorphosed banded iron-formation
- Al Psammo-pelitic schist



Overprint indicating bedrock largely obscured by residual and colluvial deposits

QUATERNARY

CENOZOIC

TERTIARY

PROTEROZOIC

ARCHAIC